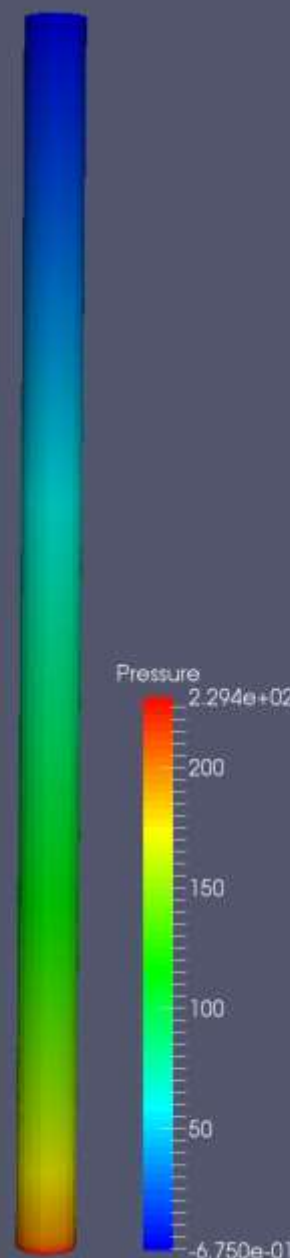
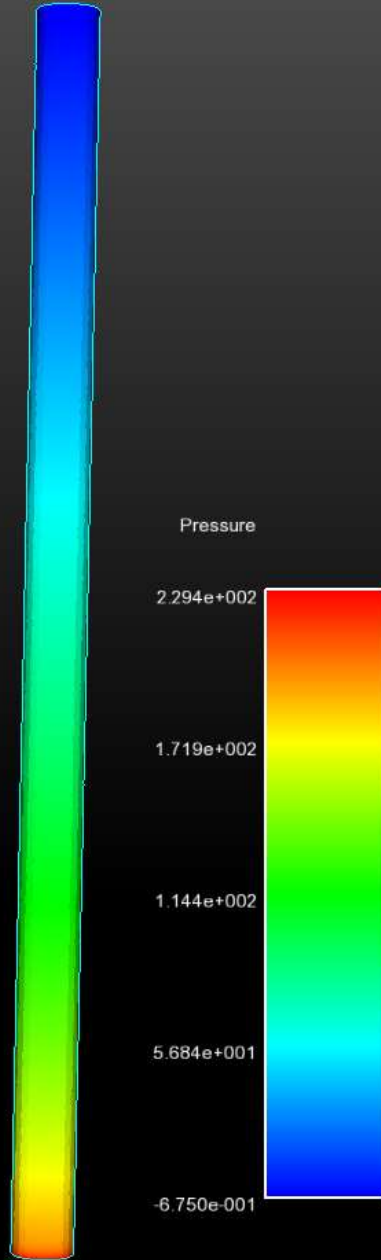
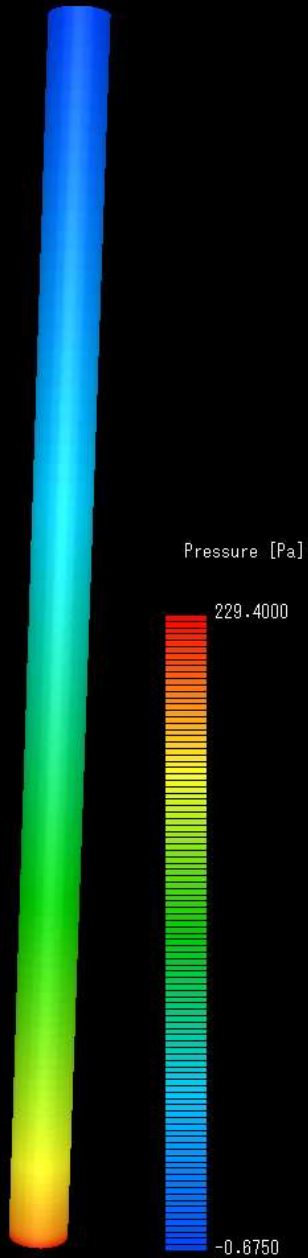


SC/Tetra post

Enight

Paraview



“Pressure” is mapped on the Surface of the cylinder With same color setting.

These figures are shown in order to test that same thing can be visualized samely in each post software.

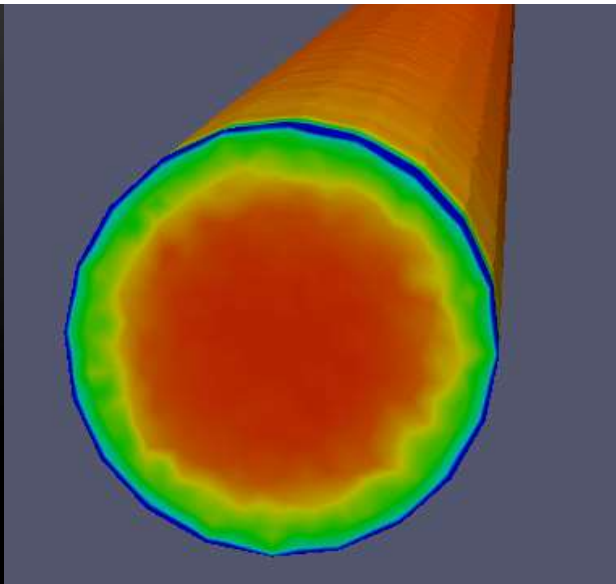
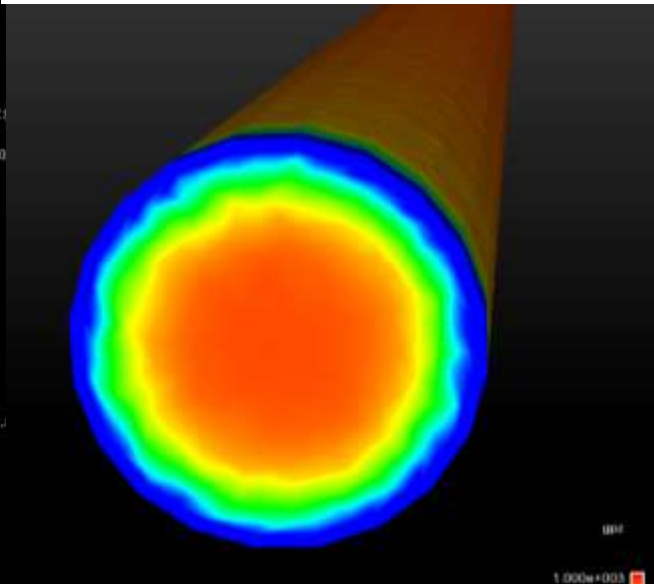
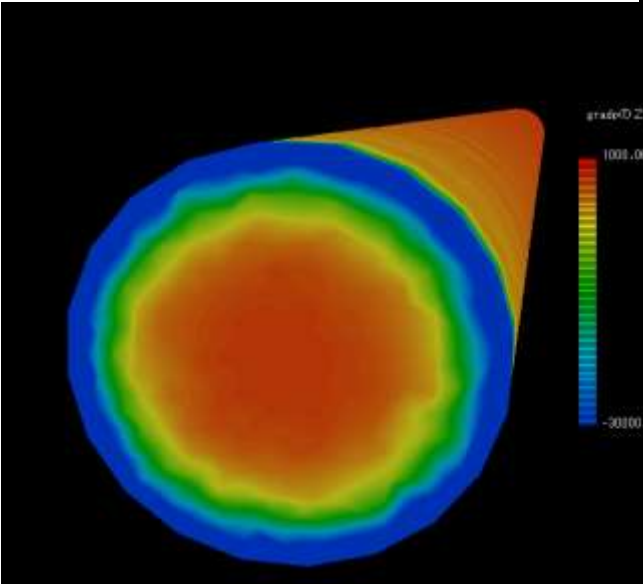
Z component of Grad (Pressure) @ Inlet

Cycles: 87

Color contour, -30000 ~ +1000

Color contour, -30000 ~ +1000

Color contour, -30000 ~ +1000

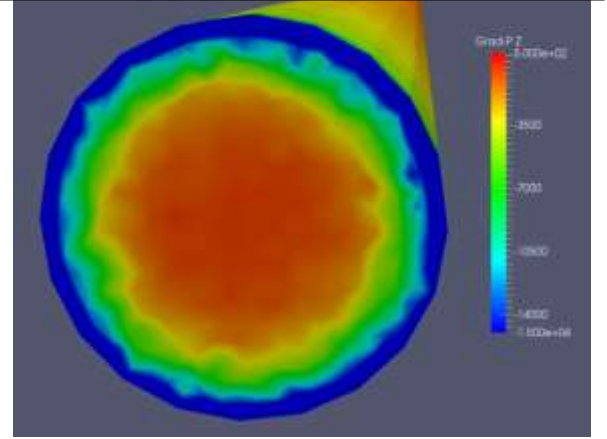


SC/Tetra post

Ensignt

Paraview

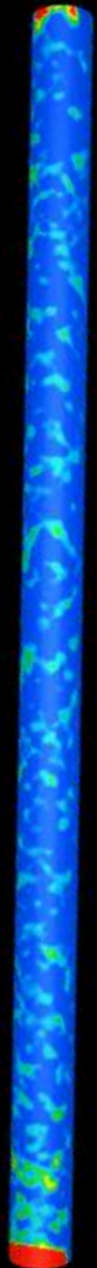
Color contour, -15000 ~ +500



Gradient of Paraview has "half value" compared to other post applications on the surface.
Thus, the image with colored contour -15000 ~ 500 resulted in same image with SC/Tetra post and Ensight.

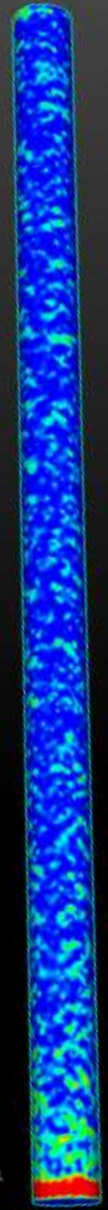
X-component of Grad (Velocity-X)

SCRYU



0~10

Ensign



0~10

Paraview



0~10

Paraview



0~5

